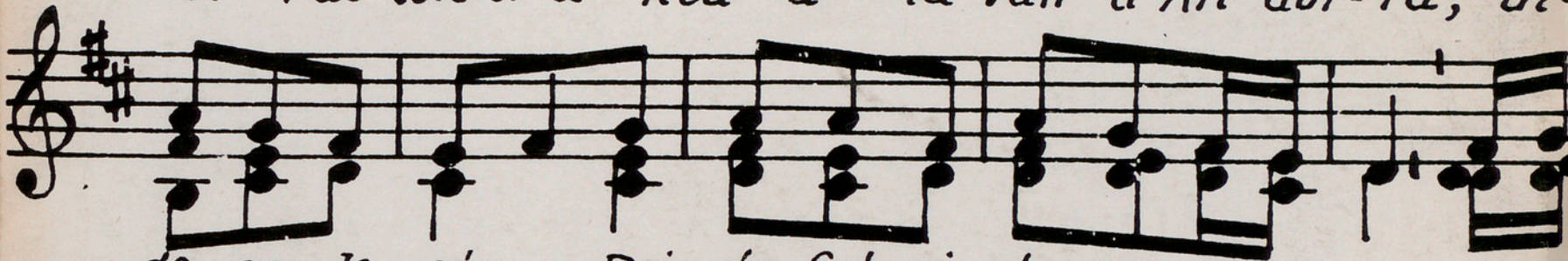
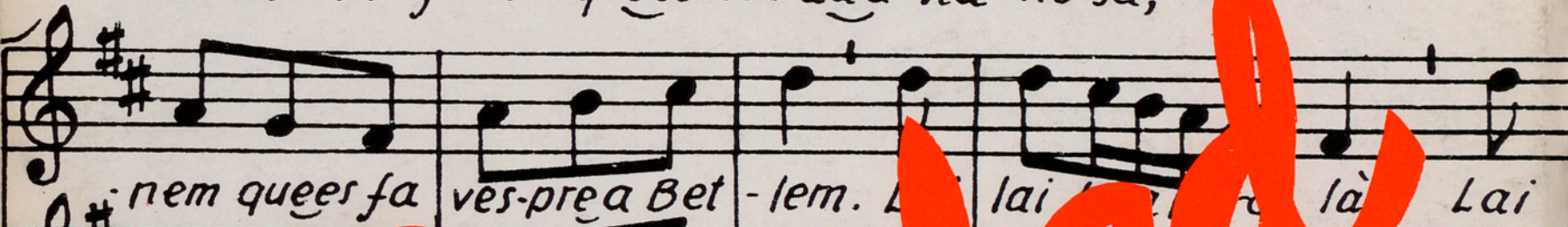




1. Pas-tors tots a-nem, amb gran re-ve-rèn-cia, a a
2. D'un clavell for-mós, co-sa molt do-no-sa, pui
3. Pas-tors si a-neu a la vall d'An-dor-ra, di-



- do-rar Je-sús Rei de Cels i ter-ra,
 Je-sús és nat d'u-na gran Se-nyo-ra, } Ca-minem, cam
 - reu a la gent que's na-dau-na Ro-sa,



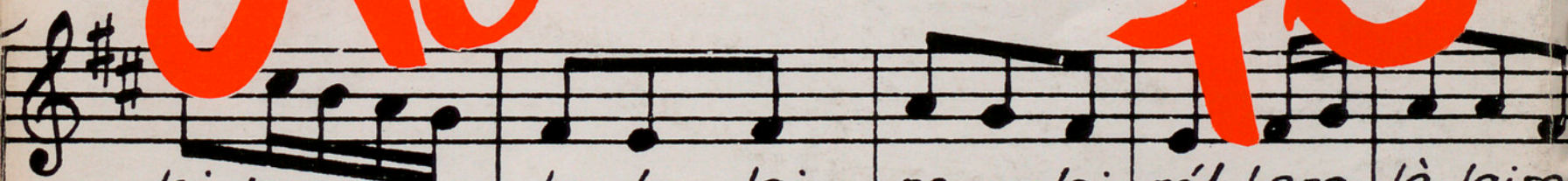
- nem que's fa ves-pre a Bet-lem. Lai lai la la la



- nem que's fa ves-pre a Bet-lem. Lai lai la la la



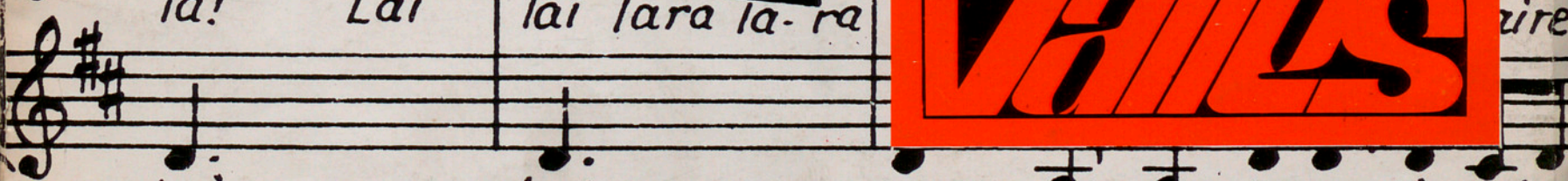
- nem que's fa ves-pre a Bet-lem. Lai lai la la la



lai la ra la-ra la la lai-re-ai-ro! Lara là laire



là! Lai lai la ra la-ra



Lai Lai Lai lai-ro! Lara là laire



tom-ba bet i fus; bet i fus i la ve-lla i el fus!

Navidad 76

